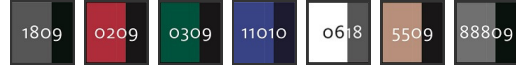




12002-149 Softshell Jacket

fleece on inner side - water-repellent

MASCOT® UNIQUE



100% polyester
305 g/m²



Three layer softshell.

Industrial care category C2

Certifications



- Breathable, windproof and water-repellent.
- Fastening with zip and internal storm flap, so the wind is kept out.
- Zipped pockets
- Form cut sleeves with great freedom of movement.
- Extra visibility with the help of reflectors.

Technical info

Two-toned. Breathable, windproof and water-repellent. Fleece on inner side. Fastening with zip and internal storm flap. Extended back. Chest pockets with zip. D-ring. Front pockets with zip. Inner pockets. Ergonomically shaped sleeves allows high freedom of movement. Pen pocket. Hook and loop band fastening at cuffs. Adjustable elastic drawstring at waist. Contrast stitching. Reflectors.

User



Logo

Logo placement:

- Workwear logo. Over left breast pocket. Max 10x4 cm/3.9x1.5 inches
- Workwear logo. Left breast pocket. Max 8x7 cm/3.1x2.7 inches
- Workwear logo. Over right breast pocket. Max 10x4 cm/3.9x1.5 inches
- Workwear logo. Right breast pocket. Max 8x5 cm/3.1x1.9 inches
- Workwear logo. Mid-back. Max 28x28 cm/11x11 inches
- Workwear logo. Special placement. Contact to discuss further